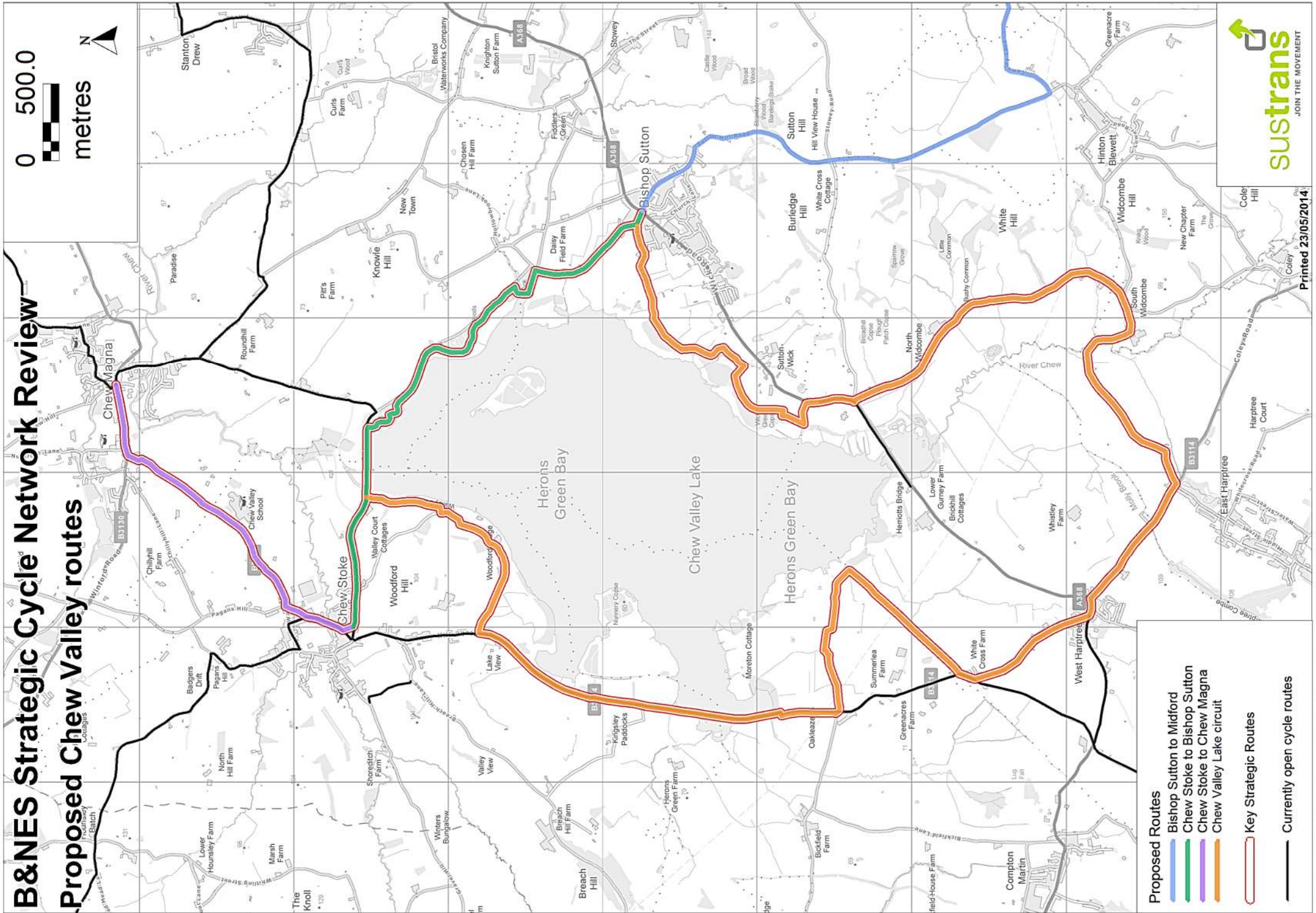


# B&NES Strategic Cycle Network Review

## Proposed Chew Valley routes



**Proposed Routes**

- Bishop Sutton to Midford
- Chew Stoke to Bishop Sutton
- Chew Stoke to Chew Magna
- Chew Valley Lake circuit

**Key Strategic Routes**

**Currently open cycle routes**



Printed 23/05/2014

Mapping contains Ordnance Survey data supplied by Welsh Assembly, HMSO, DEIRA and Dotted Eyes (C) Crown Copyright licence no 100019818